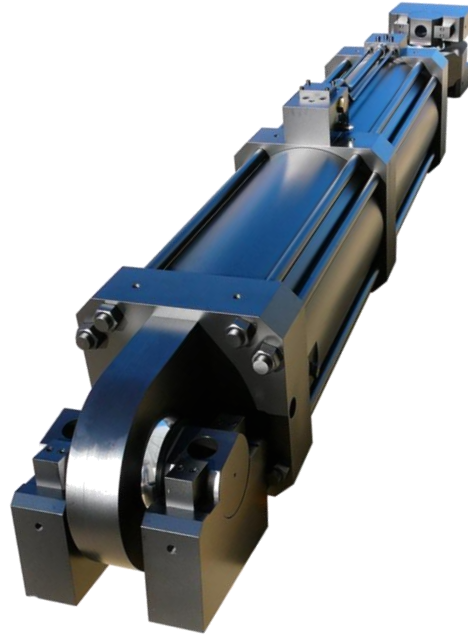


LCA Linear Servo-Rated Actuator

DTE offers a line of servo-rated actuators designed for smooth operation and a seamless fit into static or low-frequency testing applications. These actuators incorporate specific features typically provided by fatigue rated actuator such as DTE's LPA line. This line of actuators provides the precision control you have come to expect from DTE, but is a more economical option than fatigue rated LPA actuators.



Design:

These actuators are typically double acting and single ended. Position transducers and servo valves are incorporated into the design to provide precise closed loop control. This series of actuator is typically provided with a chrome piston rod. Please see charts below for typical rod diameters, piston bores, and stroke lengths. Unified or Metric Screw threads are available.

Mounting:

Load cells may be incorporated into the mounting of the actuators. DTE has developed a line of non-adjustable swivels (ISW) providing mounting options for these actuators (base and rod end). Alternate mounting styles include: extended length tie rods, base mount, front head flange mounting, and trunnion mounting. For custom mounting options, please contact a DTE sales representative.

Actuator Standard Sizes:

| Standard Stroke Length | |
|------------------------|-------|
| in. | mm |
| 2.00 | 50.8 |
| 4.00 | 101.6 |
| 6.00 | 152.4 |
| 8.00 | 203.2 |
| 10.00 | 254.0 |
| 12.00 | 304.8 |
| 20.00 | 508.0 |

| Standard Bore Diameter | |
|------------------------|-------|
| in. | mm |
| 2.00 | 50.8 |
| 2.50 | 63.5 |
| 3.25 | 82.6 |
| 4.00 | 101.6 |
| 5.00 | 127.0 |
| 6.00 | 152.4 |
| 7.00 | 177.8 |
| 8.00 | 203.2 |

| Standard Rod Diameter | |
|-----------------------|--------|
| in. | mm |
| 1.000 | 25.40 |
| 1.375 | 34.93 |
| 1.750 | 44.50 |
| 2.000 | 50.80 |
| 2.500 | 63.50 |
| 3.000 | 76.20 |
| 3.500 | 88.90 |
| 4.000 | 101.60 |
| 4.500 | 114.30 |
| 5.000 | 127.00 |
| 5.500 | 139.70 |

LCA Single Rod Actuator:
(3.00in. rod diameter, 6.00in. bore)

