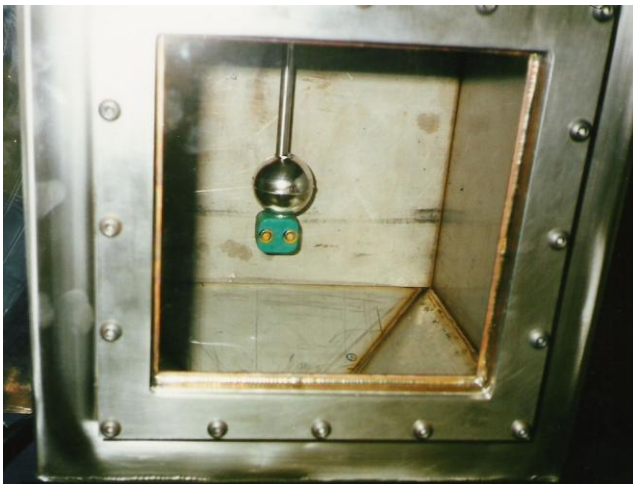


## Gas Tank Valve Rollover Test System

**Intrinsically safe system to perform flow, pressure, and safety valve testing**

DTE has designed and delivered a test stand to perform the functionality tests on gas tank filling valves in accordance with Chrysler's specification No: PF-9681.

During the filing process, the gas flow, liquid level and air pressure in the tank are monitored or controlled. The system uses either a solvent or gasoline that requires the design to be intrinsically safe.



The container holding the valve can be rotated up to 180 degrees to simulate a roll-over condition to monitor the valve performance in an extreme orientation.



The control system consists of a PC with National Instruments' hardware along with a Lab View software interface for test setup, control, and data acquisition.

### Specification:

- Fluid level control
- Air rate control
- Air flow control 50L/min
- Air flow control 10ccm
- Liquid flow control 10 l/min
- PC with LabView, data acquisition
- PID board